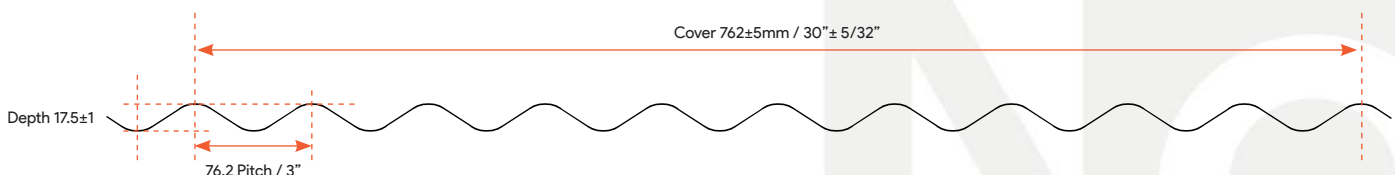
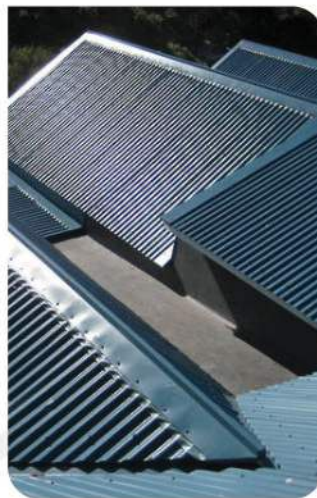


OneCorry

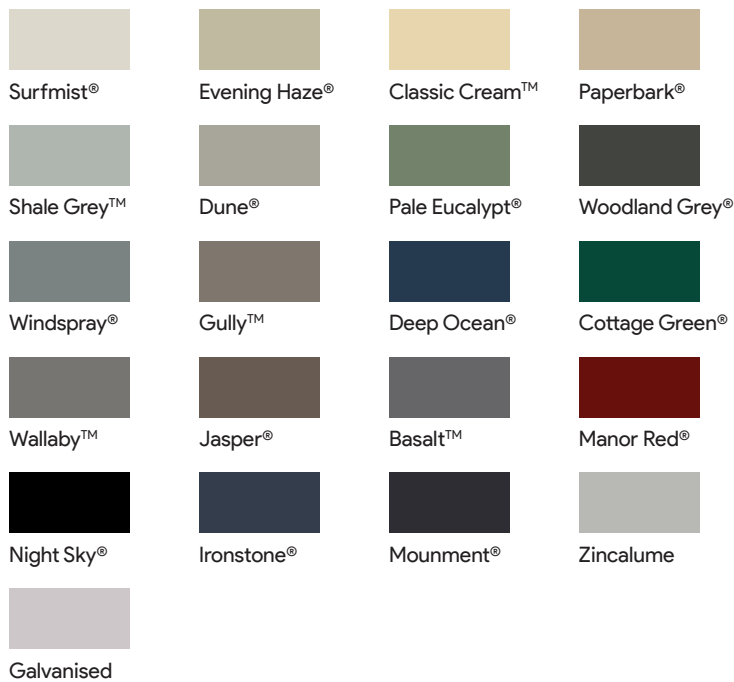
**Strong,
lightweight &
easy to handle.**

The authentic Australian corrugated roof sheeting and wall cladding profile. Equally suited for contemporary and traditional architectural designs of residential and commercial projects.

- ✓ Easy to handle roof and wall cladding
- ✓ 17.5mm rib height
- ✓ Can be laid flat or sprung curved
- ✓ Nominal cover width: 762mm
- ✓ Minimum roof pitch of 5 degrees
- ✓ Uses regular through-fixed screws
- ✓ Available in various materials and gauges



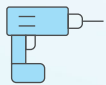
Colorbond® Colour Range



Colorbond® Matt Range



Colorbond® Ultra Range



Instructions

No1 OneCorry Roof and Wall Cladding can be directly installed with or without insulation underneath.

No1 recommends following the following fixing sequence when installing our OneCorry:

- Ensure all purlins are in line and correctly installed and that mesh and insulation (if specified) are correctly installed / positioned.
- Position and fix the first sheet ensuring the correct sheet overhangs (minimum 50mm). Where practical, we recommend that you lay sheets in the opposite direction to prevailing weather. Always ensure that screws are not overtightened.
- When fixing subsequent sheets ensure that sheet ends at the lower edge are aligned. If the ends are not aligned, then the underlap must be trimmed locally or water 'drawback' may occur.
- Measure the overall cover width at top and bottom of the sheets from time to time to avoid 'fanning'.
- Turn up the pans at the upper roof edge, turn down the pan at the lower edge and install flashings. Tools are available for turn up and turn down.
- Please contact No1 Roofing & Building Supplies for project specific details

Good practice is to clean up the roof after each days work.



Cutting

When cutting No1 cladding we recommended using a power saw with a cold cut saw blade or a power nibbler and, for localised cutting, tin snips. Always avoid the use of abrasive discs as these can cause burred edges and coating damage.



Care & maintenance

No1 recommends following these handy hints and tips to achieve maximum life from your COLORBOND® and ZINCALUME® finished products.

- In areas of little rainfall or a prolonged dry period, products should be cleaned regularly.
- Some cleaning products like brick cleaning acid should not come into contact with steel fascia, gutter, or roofing and walling.
- Do not immerse these products in sand, soil or concrete.
- Always remove metal debris from cutting and/or drilling to avoid swarf damage.
- Material compatibility - make sure materials made of different metal, such as copper and lead, do not make contact with these products, and water does not run from one to the other. Contact No1 for more information if required.
- Roofing and guttering should be free draining and free from dirt and leaves.