

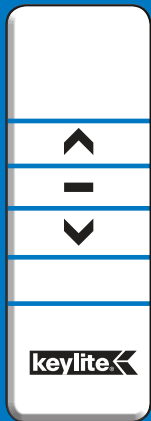


Keylite Blinds

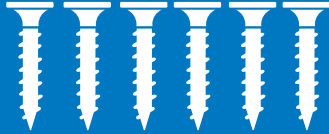
Solar Blind Installation

Components

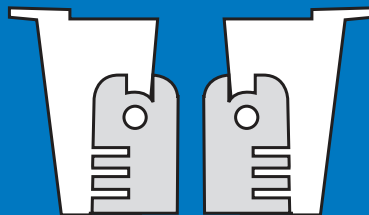
Check all the components have been supplied



Remote control



Screws (x6)



Installation Brackets (x2)



Side Rails (x2)



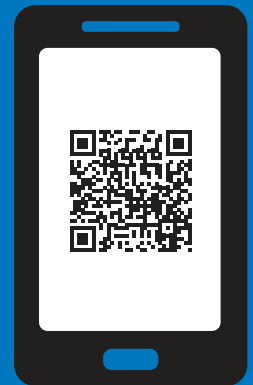
Cassette (x1)

Tools Required



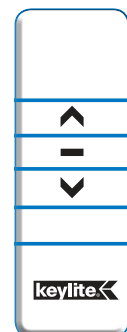
Check out our installation video on the **Keylite** website.

www.youtube.com/watch?v=itUOxIfmdJo



WARNING

DO NOT OPERATE REMOTE CONTROL UNTIL THE BLIND HAS BEEN FULLY INSTALLED.

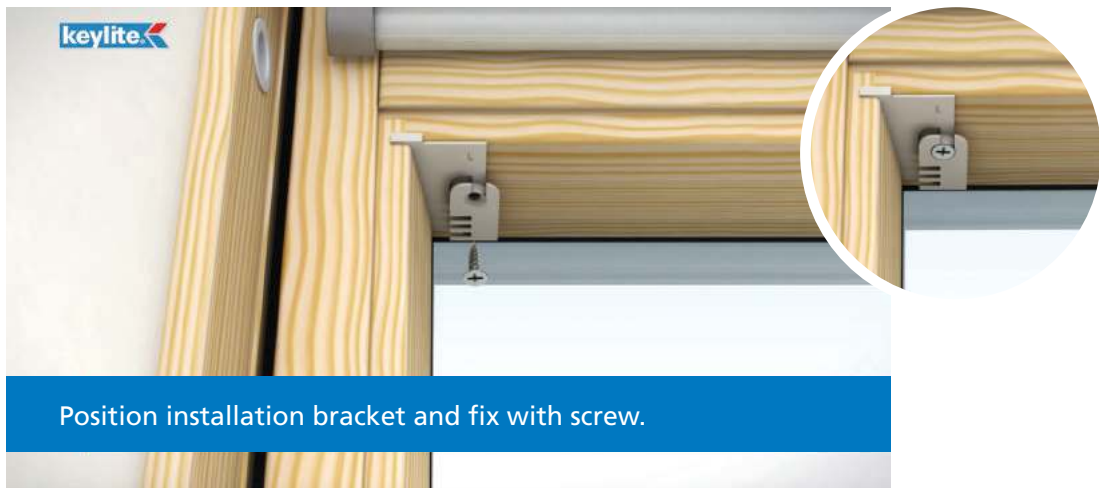


Instructions

1



2



3



4



5



6



7



8



9



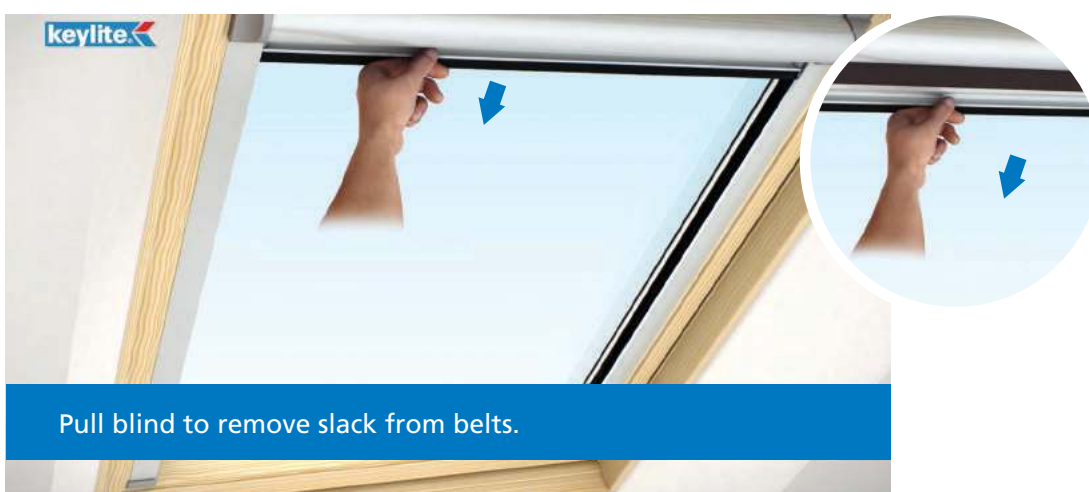
10



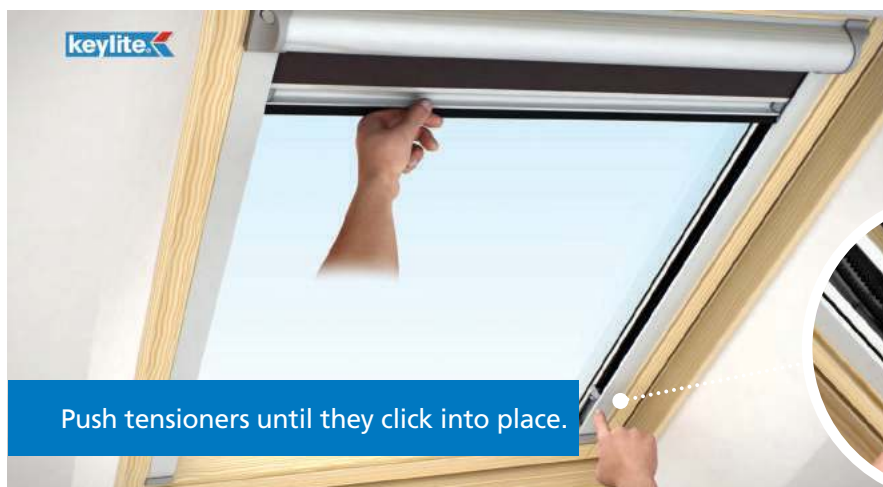
11



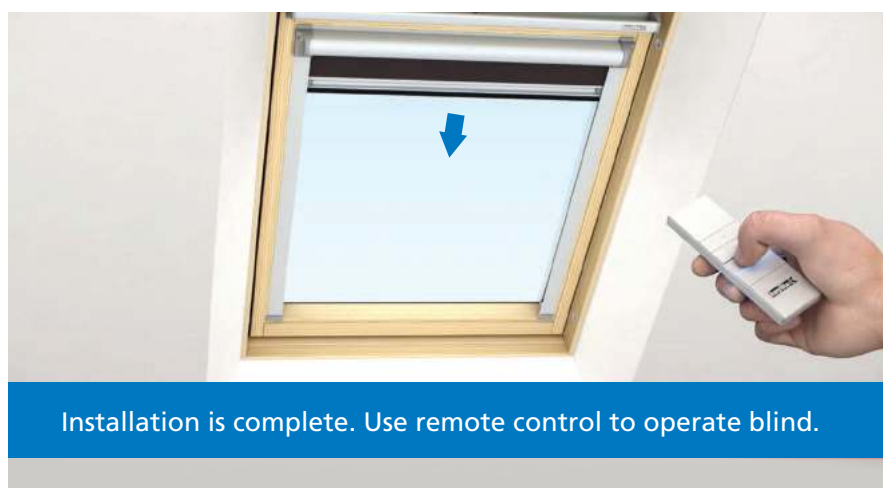
12



13

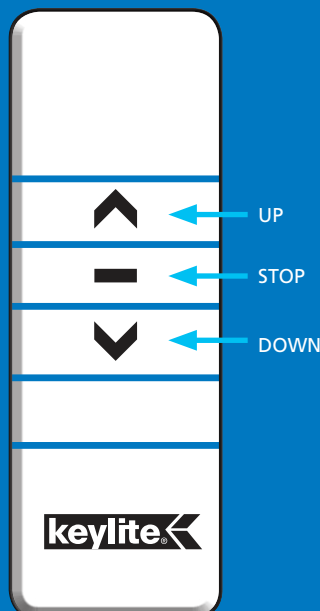


14



Blind Operation

SINGLE CHANNEL REMOTE CONTROL



OPERATION – Your blind will arrive with the top and bottom stop limits factory set.

Close the blind: press and hold the down button on the remote control for 1 second then release the blind will begin to close, the blind will stop automatically at the bottom of the window.

Open the blind: press and hold the up button on the remote control for 1 second then release the blind will begin to open, the blind will stop automatically at the top of the window.

The blind can be stopped at any point during an open or close cycle by pressing the stop button for 1 second then releasing.

Blind speed settings: Your blind has 3 operating speed functions (1) Slow (2) Medium (3) Fast

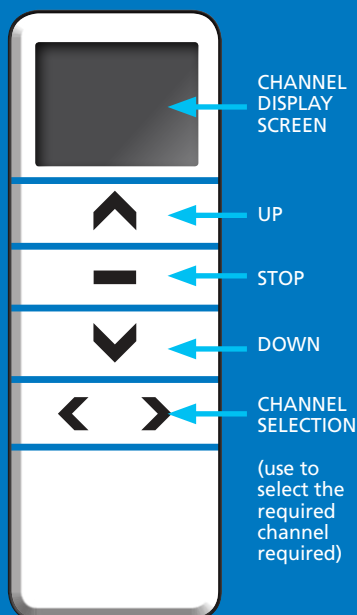
Your blind is already pre-set to the medium speed (2).

To **increase the speed** press & **HOLD** both the **STOP** and **UP** buttons simultaneously until the blind jogs 3 times, your blind will now operate faster.

To **decrease the speed** press & **HOLD** both the **STOP** and **DOWN** buttons simultaneously until the blind jogs 1 time your blind will now operate slower.

MULTI CHANNEL REMOTE CONTROL

For installations of multiple blinds, you may have ordered or wish to order the multi-channel remote control which can operate up to 15 blinds individually or simultaneously.

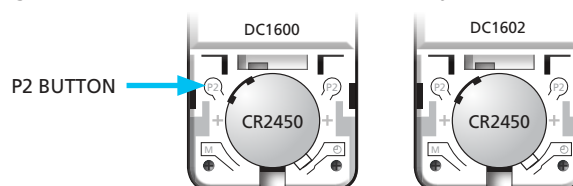


Pairing the multi-channel remote control to your blinds -

For each blind you wish to control with the multi-channel remote control please follow the steps below:

(1) Move the blind you wish to pair to the mid-point on your window.

(2) Remove the back battery covers from the multi-channel remote control and single channel remote control of the blind you want to pair.



(3) Select channel 1 on the multi-channel remote control using the channel selection buttons, on the single channel remote control press the P2 button, the blind will jog once, press the P2 button again the blind will jog again.

(4) On the multi-channel remote control press P2 button, the blind will jog, your multi-channel remote control is now paired and will operate the blind.

*** If the remote control does not pair leave for 1 minute and follow steps 3 & 4 again.** Repeat the steps above to add multiple blinds ensuring to select the next channel on the multi-channel remote control eg: 1st blind channel 1, 2nd blind channel 2.

To operate all blinds simultaneously select channel 0 on the multichannel remote control.