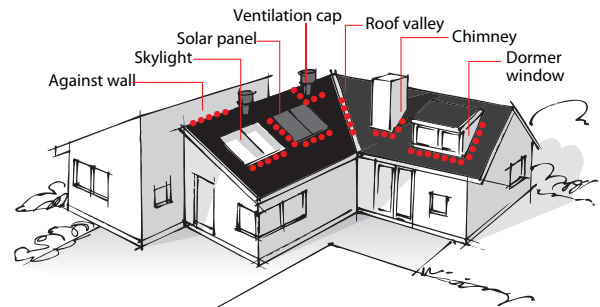


Flashing for any roof project

- Fast Flash can be used on metal roofs, tiles, polycarbonate, concrete, glass and polished wood. The product will be supported with a 20 year warranty provided the surface is prepared, so that it is clean and free of dust oils, grease, wax and detergents.
- When used on vertical surfaces, such as, exposed brick, rough concrete or unpolished timber then a 25mm x 1mm aluminium strip is recommended to secure the top side of the membrane.
- Do not pre-stretch the membrane prior to installation.
- The Fast Flash membrane should be formed to the profile of the surface by hand or by using a roller. The use of any other tools or mechanically stretching the membrane prior to adhering the Fast Flash will void the warranty.



1

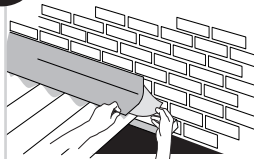
Before installing Fast Flash, make sure the roof is clean of dust and free of oils, grease, wax and detergents etc.

2



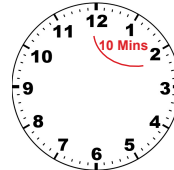
Cut the Fast Flash to length with roofing snips or a trade knife.

3



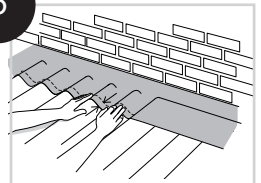
Remove the backing paper to allow adhesion to the wall or the chimney.

4



The butyl adhesive backing has a 10 minute curing time, allowing adequate flexibility to reposition Fast Flash if required.

5



Once in correct position, remove the remaining backing paper and gently form the Fast Flash to the roof profile using your hands.

6



When required all lineal overlaps of Fast Flash must be 50mm in length & formed to the wall & roof profile in order to eliminate or minimise any gaps between the flashing and wall/tile.

7

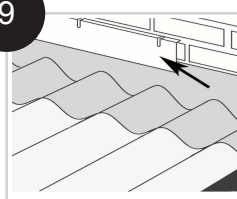
Corners/change of direction - Using a trade knife, appropriately slice FastFlash lengths to ensure a min. corner/change in direction overlap of 40mm. Fold corner edges and form the the roof profile in order to eliminate/minimise and gaps between the flashing and wall/tile.

8



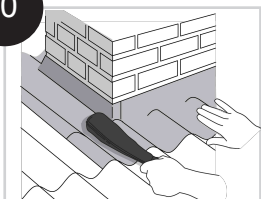
Fast Flash is malleable and stretch-able, allowing easy folding around corners using hands

9



When used on vertical surfaces with exposed brick or unpolished timber, a 25mm x 1mm Aluminium strip is recommended

10



For a professional finish, dress lightly using sand hammer



Compliance

To ensure compliance with AS1530.8.1 BAL Rating 29, the points below must be followed.

- Exposed horizontal perimeter edges to the wall and tile surfaces must be edged sealed with a 10mm bead of Deks Flashing Adhesive.
- Changes in FastFlash direction may create gaps. All gaps must be minimal (5mm or less) and these gaps must be filled with Deks Flashing Adhesive.
- Overlaps must be the following minimum dimensions:
 - Overlaps due to change in direction: 40mm
 - Overlaps due to lineal length: 50mm
- Any gaps to wall or tile substrates created by overlaps must be minimal (5mm or less) and must be filled using DEKS Flashing Adhesive.
- Protective film must be removed once installation is complete.

