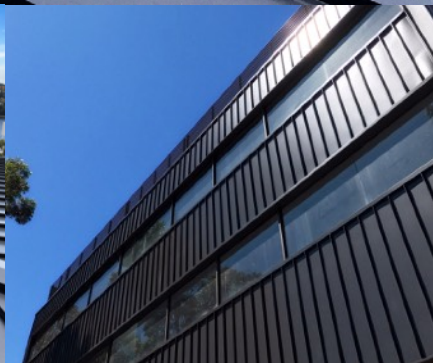


# No.1

**ROOFING & BUILDING  
SUPPLIES**

**Datasheet**

No.1 Architectural  
Panel Systems  
**SNAPLINE 45™**



[www.no1roofing.com.au](http://www.no1roofing.com.au)



**Snapline 45™** is a modern, versatile roofing and wall cladding sheet. The profile has a deep rib height of 45mm and the cover width can be varied from 305 mm to 610 mm. It is available in various materials such as Colorbond, Zinalume, Zinc, Copper, Aluminium and COR-TEN. This gives the designer and architect a wide choice of aesthetics to both roofing and walling. The Snapline 45™ can be rolled on site with a mobile roll former in single, long lengths. Snapline 45™ has the feature of rolling stiffener ribs and clip relief (optional) into the pan for added rigidity and reducing any dimples that may be caused by the head of the screw with foot traffic pressure. One of the main advantages of this profile is that it is a structural, self supporting profile that does not require continuous backing (subject to recommended spans and material tensile strengths). Softer metals such as Zinc and Copper will still require plywood/continuous support under roofing applications.

## Snapline 45™ Characteristics

Standard Module Sizes	45 x 305mm	45 x 345mm	45 x 445mm
Lengths (Min - Max)	0.3-15 metres (can be longer depending on site limitations and material choice)		
Rib Height	45mm		
Application	Roofing & Walling for new construction or renovations		
Maximum Spans	Roofing 0.55 BMT Colorbond (mm)	Walling 0.55 BMT Colorbond (mm)	
End Spans	600mm	1800mm	
Internal Spans	900mm	1800mm	
Minimum Pitch Requirement	1 Degree		

\*Custom widths available upon request.

\*Dimensions are subject to +/- 5mm tolerance

## Material Availability

- 0.55mm BMT Colorbond / Zinalume / Metallic / Ultra
- 0.7mm BMT Copper
- 0.7mm BMT Aluminium
- 0.7mm Ruukki COR-TEN
- 0.7mm Zintek Zinc, VMZinc, Rhein Zinc, Jarden Zinc



## Fixing Recommendation

Snapline 45™ sheets should be laid into the prevailing wind. For batten fixing, concealed fixing clips hook over the small rib of the sheet, then fixed down onto the supports within the maximum span recommendations with 10 gauge countersunk screws. The larger rib on the preceding roof sheet is then snapped and locked down over the small rib and clip. The edges of the sheets should be fixed for strength and spanning capability.

For optimum finish and softer metals, Snapline 45™ should be installed on a plywood substrate. The support needs to be ventilated, rigid and continuous where all parts of the panels are laid. The plywood minimum thickness shall be 15mm for cladding and 18mm for roofing. Panels are fixed with concealed clips every 900mm maximum centres. Clips are fixed with 10 gauge countersunk screws onto the timber supports. The small rib is held in place by the clip. The larger rib is placed over both the clip and small rib then snapped down to create a sealed joint.

Material choice to be verified by client and installation must comply in accordance with the BCA. Testing to AS1562.1, AS4040.1 and AS4040.2 is currently underway and literature will be made available once complete.

***Although all care is taken in the creation of this document it is only for the purpose of providing information on available profiles. We strongly recommend you discuss your project with us before selecting these products.***

