

No.1

ROOFING & BUILDING
SUPPLIES

Datasheet

No.1 Architectural
Panel Systems

INTERLOCKING PANEL

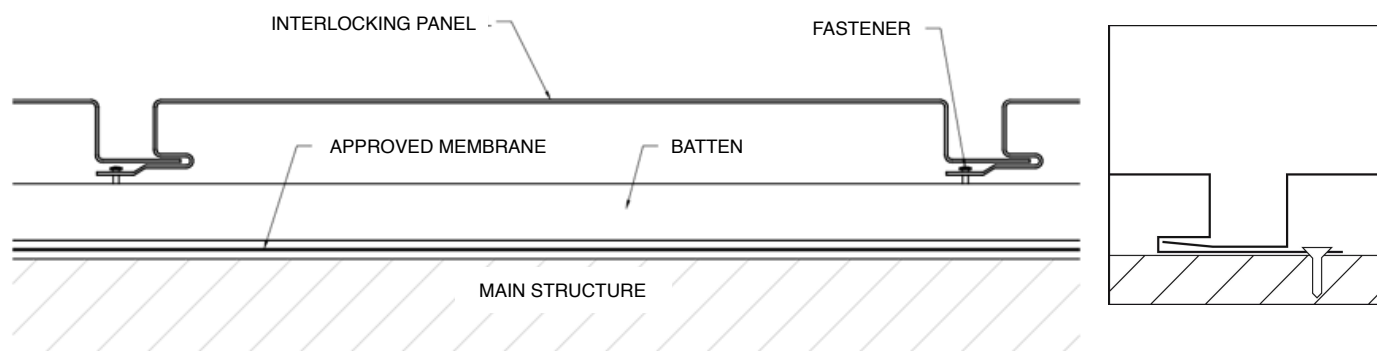


www.no1roofing.com.au



Interlocking Panel is a contemporary looking wall cladding system installed with a ventilated air gap for external and internal applications. The panels are connected by an interlocking groove giving it an elegant appearance of a recessed joint. The reveal panel can range from 185mm to 385mm in width and lengths up to 6.0m. Shadow lines can range from 0mm to 25mm.

Interlocking panels are laid and fixed down on the grooved flange using concealed fasteners directly onto the batten. The panels are connected by inserting the male flange into the groove. The load bearing main structure can be a concrete wall, masonry wall or steel. The batten can be either timber or metal. The battens shall be placed at right angles to the panels. The panels can be laid horizontally, vertically or diagonally. In the case of non vertical walls, a waterproof membrane must be installed behind the ventilation gap. Material choice to be verified by client and installation must comply in accordance with the BCA.



Interlocking Panel Characteristics

| Standard Module Sizes | 25 x 200mm | 25 x 250mm | 25 x 300mm |
|---------------------------|--|------------|------------|
| Lengths (Min - Max) | 0.5m to 6.0m (4m recommended) | | |
| Joint Width (Shadow Line) | 0mm to 25mm | | |
| Rib Height | 25mm | | |
| Application | New construction or renovation on vertical walls | | |
| Maximum Battens Spans | 800mm | 700mm | 600mm |

*Custom widths available upon request.

*Dimensions are subject to +/- 10mm tolerance.

Material Availability

- VM-Zinc, Rhine Zinc, Jarden Zinc (1.0mm BMT)
- 0.55mm BMT Colorbond / Zinalume / Metallic / Ultra
- 0.9mm BMT Copper
- 0.9mm BMT Aluminium

Although all care is taken in the creation of this document it is only for the purpose of providing information on available profiles. We strongly recommend you discuss your project with us before selecting these products.

sales@no1roofing.com.au

