



SafetyLink®

*Innovative
Fall Protection*



SafetyLink is an innovative anchor company achieving success and keeping you safe whilst working at heights.

ROOF ANCHORS

LIFELINE SYSTEMS

PERMANENT LADDERS

LADDER STABILISERS

SafetyLinks dedicated design team have been working vigorously over the past decade, creating a multitude of new anchors to suit any working at heights scenario.

SafetyLink supply all height safety equipment to all industries - buildings, commercial and industrial sites. From a series of anchor points to a complete network of systems for maintenance, cleaning access and inspections, SafetyLink has you covered.

All SafetyLink products undergo extensive testing in a multitude of scenarios by accredited testing facilities and comply to Australian and New Zealand standards.

SafetyLinks experienced technical team is complemented with comprehensive installation manuals and testing certificates. We have national qualified installers keeping your assets safe.

SafetyLink will provide you with the following:

- All products tested and manufactured to Australian and New Zealand Standards.
- All distributors and installers are trained to use SafetyLink products.
- Supply installation guides, testing results and product sheets.
- Use a qualified and reputable testing authority.
- Supply a large range of roof anchors that protect you from the ground up, allowing complete access to your roof.
- Installers are qualified to do yearly inspections on your anchors as per Australian and New Zealand Standards.

Benefits of choosing SafetyLink:

SafetyLink's roof anchor point designs incorporate the same stand out feature of all our roof anchors maximising energy absorption. This dynamic design reduces the load back onto the structure and the person attached to the roof anchor.

A fall is never an anticipated event when working at heights, therefore the direction of your fall cannot be accurately predicted. All SafetyLink roof anchors are designed and tested as multi-directional.



SafetyLink®
*Innovative
Fall Protection*

SafetyLink Pty Ltd 1300 789 545
+61 2 4964 1068 info@safetylink.com

**'Innovative
Fall Protection'**

For further information and to order our products visit our website.

www.safetylink.com



SafetyLink®
Innovative
Fall Protection

Products

TileLink™



Tiled Roof Anchor

- Energy absorbing.
- Multi directional 316 stainless steel.
- No need to cut sarking, eliminating waterproofing issues.
- Fixes to rafter with five roofing screws.
- Fits snugly between the existing tiles.
- Fast installation, rated as one person anchor.



FrogLink®



Metal Roof Anchor

- Energy absorbing.
- Multi directional 316 stainless steel, surface mounted anchor.
- One single row of attachment holes.
- Secured with seven Gesipa Bulbrite Rivets.
- Fast installation, rated as a one person anchor.



FrogLine™ Lifeline



- Patented low profile design.
- Fast simple installation.
- Advanced shock absorbing serpentine.
- Innovative built in fall indicators.
- Quick connect shuttle.
- Smooth transition over intermediates.
- 316 stainless steel construction.



FrogLine™ Shuttle



- Flawless functionality with a durable solid stainless steel construction.
- Intended for use with 8mm stainless steel cables.
- For use on SafetyLinks FrogLine Lifeline



TempLink 3000™



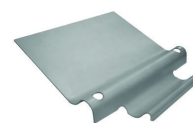
- Temporary Roof Anchor.
- Patented multi-directional fall device.
- 316 stainless steel.
- Lightweight compact unit, enabling easy manoeuvring to desired location.
- Easy to secure tabs.
- Single person.
- Rated at 15kN.



Fixed LadderLink™



- Made from marine grade aluminum.
- Quick and easy installation.
- Fit to metal/tile/concrete structure.
- Essential entry point system to stabilise your ladder.



No.1
ROOFING & BUILDING
SUPPLIES

No1 Roofing and Building Supplies

North Narrabeen

02 9970 8359

Mona Vale

02 9979 2133

Seven Hills

02 9838 8730

Prestons

02 8798 2320

Regents Park

02 9644 2717

Central Coast

0478 790 157

sales@no1roofing.com.au | www.no1roofing.com.au

Distributors of SafetyLink Products

'INNOVATIVE FALL PROTECTION'